

HOLLIS PARKS & RECREATION

Winter 2022

35 Town Farm Road, Hollis, ME 04042

207.929.5142

www.hollismaine.org/parks-recreation



HOW CAN YOU HELP?!!

Debbie is looking for new members for the Sports Complex Committee. We need people who have time and energy to get involved. We need help to go forward with our expansion plan at the Sports Complex. We will be doing a lot of fundraising to help the expansion become a reality.

If you have any questions about information in the newsletter or activities offered through the Recreation Department, please call and talk with Debbie Tefft or Madison Moody. As always, we welcome your input and involvement. If you have any ideas for programs or suggestions, please share them with us.



January 2022- March 2022

The Holidays are finishing up and we are starting off the new year with many different programs beginning and some others continuing where they left off.



GET READY FOR MORE NERF NIGHTS THIS WINTER!

Be on the Lookout for dates coming soon!

Check our Facebook page and Hollis Town page for updates!

<https://www.hollismaine.org/>

5th & 6th GRADE GIRLS BASKETBALL LEAGUE

There are two teams for these grades in the Bonny Eagle District. They will play in a league with Gorham, Waterboro, Kennebunk, Kennebunkport and Arundel. This session will end in March. For more information, call Debbie at 929-5142.

FEE: \$45 (Each participant will receive a team shirt and participation trophy)

SENIOR LEAGUE GIRLS BASKETBALL

Any girl in 7th grade or older who wants to play basketball is welcome! Teams consist of a mix of ages, 7th grade to adult girls and women. There is open gym/practice for this age group on Wednesdays from 7:00-8:30pm at the Hollis Elementary School Gymnasium. (\$2.00 fee if not part of the league.) Games are normally on Sunday afternoon. We welcome new players!

FEE: \$45 (Each participant will receive a team shirt and participation trophy)

Registration: Call Debbie Tefft at 929-5142 as soon as possible to get involved!

REMINDER – AFTER SCHOOL PROGRAMS – REMINDER

Remember to send a note to the school giving your child permission to participate in an after school program or class.

Please note for all afterschool programs you must call the office and register beforehand. We cannot take your child from the school unless we have registration paperwork completed prior to the start of the program and you have informed the school office that your child is doing one of our programs. Non-residents must pay a \$35.00 out-of-town fee plus the program fee if they have not already done so this year.

AFTER SCHOOL PROGRAMS

Registration information

Please note for all afterschool programs you must call the office and register beforehand. We cannot take your child from the school unless we have registration paperwork completed prior to the start of the program. Non-residents must pay a \$35.00 out-of-town fee plus the program fee if they have not already done so this year. **You must also let the school know your child will be participating in one of our programs.**

MONDAYS**Get Outside Club**

The new after school club will explore the many opportunities we have here in Maine, and right here in Hollis, to get outdoors and participate in outdoor recreation, and with that the many skills one might need to do so safely. With this first session focusing on winter activities, we will explore different modes of travel such as snowshoeing, hiking, and cross-country skiing. We will also talk about safety and survival skills such as orienteering, shelter building, what and how to pack a backpack, animal identification, and many more useful skills to have in the Maine woods. We hope to have some different guest speakers come in during the program to talk about their roles and experiences in the outdoors. This program is open to 3rd, 4th, and 5th graders. The eight-week session of this program will start on Monday, January 24th at the community building from 3 pm until 5 pm and continue weekly. We hope to add additional sessions based on the interest.

FEE: \$30

MONDAYS**PeeWee Basketball (3:00-5:00)**

We will be holding a PeeWee Basketball program for girls and boys in K-1st grade. This will be a four-week instructional program beginning Monday, January 24th and continuing through February 14th. Participants will receive their own basketball to take home at the end of the program.

FEE: \$25

TUESDAYS**Oil Painting (3:00 pm – 5:00 pm)**

There will be oil painting classes continuing Tuesdays throughout the Winter/Spring at the Hollis Community Building. Debbie Tefft will be the instructor for the class. These classes are open to children of **ALL** levels of painting. Participants will complete at least two paintings. Sessions/dates are as follows:

SESSION I–Jan. 18th, 25th, Feb. 4th, 11th, 25th, Feb. 1st, 8th, 15th

SESSION II - March 1st, 8th, 15th, 22nd, 29th, April 5th & 12th

Fee: \$8.00 per class



TUESDAYS

INDOOR SOCCER (3:00 pm-5:00 pm)

We are hoping to start a 5 week after school indoor soccer program. It will be a combination of skills, drills and game play.

Session Dates: January 18th, 25th; February 1st, 8th and 15th

FEE: \$25

WEDNESDAYS

Floor Hockey (3:00 pm – 5:00 pm)

We will be offering another two sessions of after school floor hockey starting January 5th at the Hollis Elementary Gymnasium. Call the office/ go online to register. Payment and paperwork for the program must be completed before your child can start.

SESSION II: January 5TH, 12TH, 19TH, 26TH; February 2ND, 9TH, 16TH

SESSION III: March 2nd, 9th, 16th, 23rd, 30th; April 6th, 13th

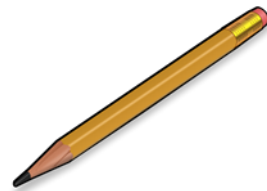
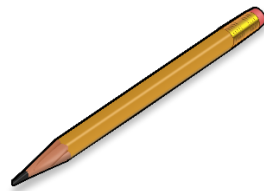
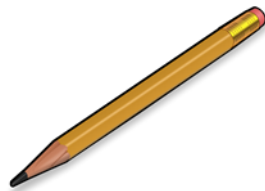
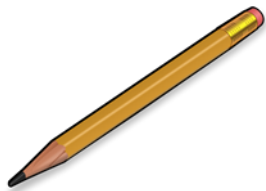
FEE: \$45 per session

THURSDAYS

Drawing Classes (3:00 pm – 5:00 pm)

There will be drawing classes at the Hollis Community Building on Thursdays. Debbie Tefft is the instructor for this course. This is a drop-in class and is offered throughout the school year.

Fee: \$4.00 per class.



FRIDAYS**Gymnastics (3:00pm- 5:00pm)**

We are continuing to offer gymnastics at the Hollis Community Building. This program is open to boys and girls from K-5th.

SESSION I – Make up dates 1/7-(Cancelled due to snow day), 1/14

SESSION II: January 21st, 28th; February 4th, 11th, 18th

Fee: \$30



If you have any ideas for programs or suggestions, please share them with us.

VACATION CAMPS, PLAY DAYS AND LATE ARRIVAL

Late Arrival Days: We provide Before Care for late arrival days from 6:30 am until school begins. The upcoming late arrival dates are: (Wednesdays) January 12th, February 9th, March 2nd, April 6th, May 4th.

Fee: \$10.00 for children who are currently in the Before/After Care Program & \$15.00 for those who are not.

February Vacation Camp

Keep your child busy and having fun during February break! We have lots of activities, crafts, and fun planned for your child! The vacation camp runs Monday, February 21st through Friday February 25th from 6:30 am to 6:00 pm. Please send lunch and a change of clothes along with appropriate clothing for weather. Please call the office at 929-5142 to register. You must be registered before Friday, February 18th to attend the trips- Don't miss out! A school notice will be sent detailing the activities/trips for the five days.

Fee: \$45.00/day.

Upcoming Play Dates: January 17, March 18. We will be open from 6:30am to 6pm for a Play Day at the rec. Play days are for school age children. Please send lunch and a change of clothes along with appropriate outdoor clothing. Water is available. Juice and soda are available for \$1.00.

Upcoming Vacation Camp: April Break; Monday, 4/18- Friday 4/22. Make sure to check our website and Facebook for the upcoming schedule for the week!

HOLLIS REC SNOWSHOE RENTALS

We are now able to offer snowshoe rentals to the community! We have a variety of sizes for children and adults, and some trekking poles available. Get out this winter and explore! Feel free to ask about different trail systems in town that you can visit such as Googins Woods and Indian Cellar. We have some trail maps available in our office as well. We do charge a small fee for these rentals in hopes to purchase more snowshoes and trekking poles.

Fee: \$2.00 per pair, or \$6.00 max per family/group

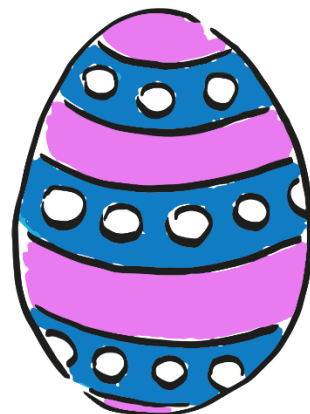
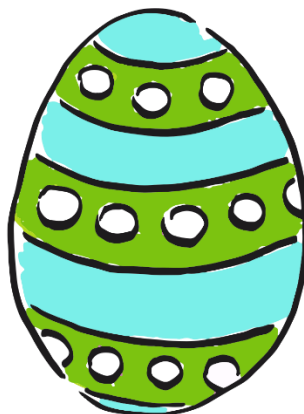
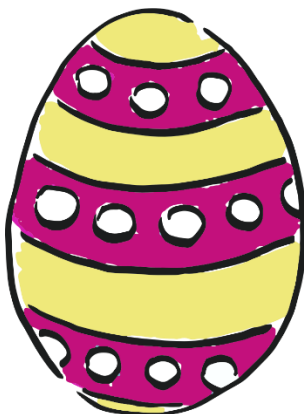


EASTER EGG HUNT

Don't forget about the Easter Egg Hunt at Hollis Community Building!

Saturday, April 16, 1-3pm,

\$3 per person



POSTAL PATRON

PRE-SORT
U.S. POSTAGE PAID
PERMIT #7

HOLLIS PARKS & RECREATION
35 TOWN FARM ROAD
HOLLIS, ME 04042