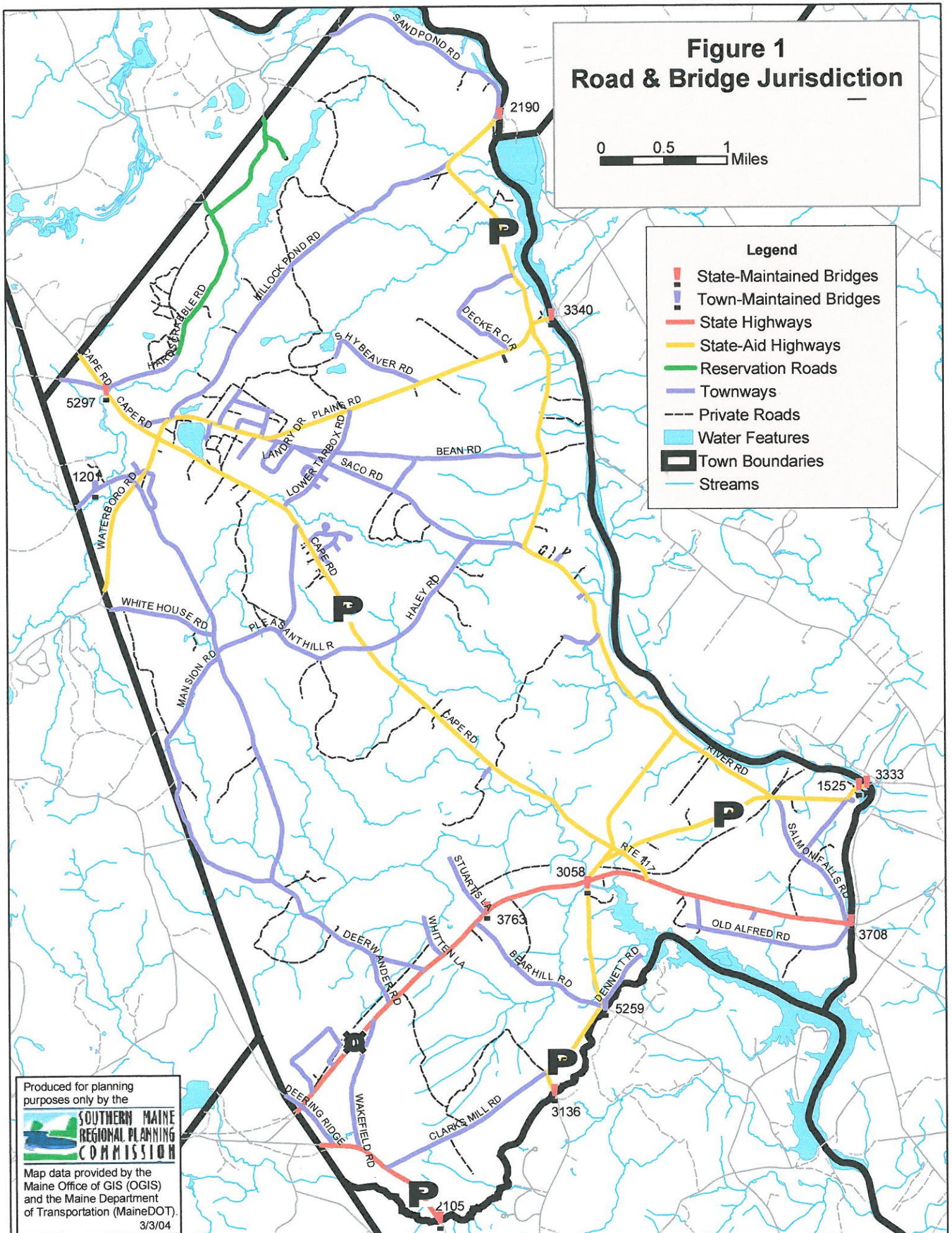


Figure 1
Road & Bridge Jurisdiction

0 0.5 1 Miles

Legend

- █ State-Maintained Bridges
- █ Town-Maintained Bridges
- State Highways
- State-Aid Highways
- Reservation Roads
- Townways
- Private Roads
- █ Water Features
- ▭ Town Boundaries
- Streams



Produced for planning
purposes only by the



Map data provided by the
Maine Office of GIS (OGIS)
and the Maine Department
of Transportation (MaineDOT).
3/3/04

Figure 2 Road & Bridge Condition

0 0.5 1 Miles

Legend

Bridges (2002 Ratings)

Federal Sufficiency Rating

- █ Critical
- █ Fair
- █ Poor
- █ Satisfactory
- █ Good

Public Roads (1998 or 2002 Ratings)

Pavement Condition Rating

— Not Rated

█ 0.01 - 1.00

█ 1.01 - 2.00

█ 2.01 - 3.00

█ 3.01 - 4.00

█ 4.01 - 5.00

--- Private Roads

█ Water Features

Town Boundaries

— Streams

Produced for planning
purposes only by the



Map data provided by the
Maine Office of GIS (OGIS)
and the Maine Department
of Transportation (MaineDOT).
3/3/04

Figure 3
Functional Classification

0 0.5 1 Miles

Legend

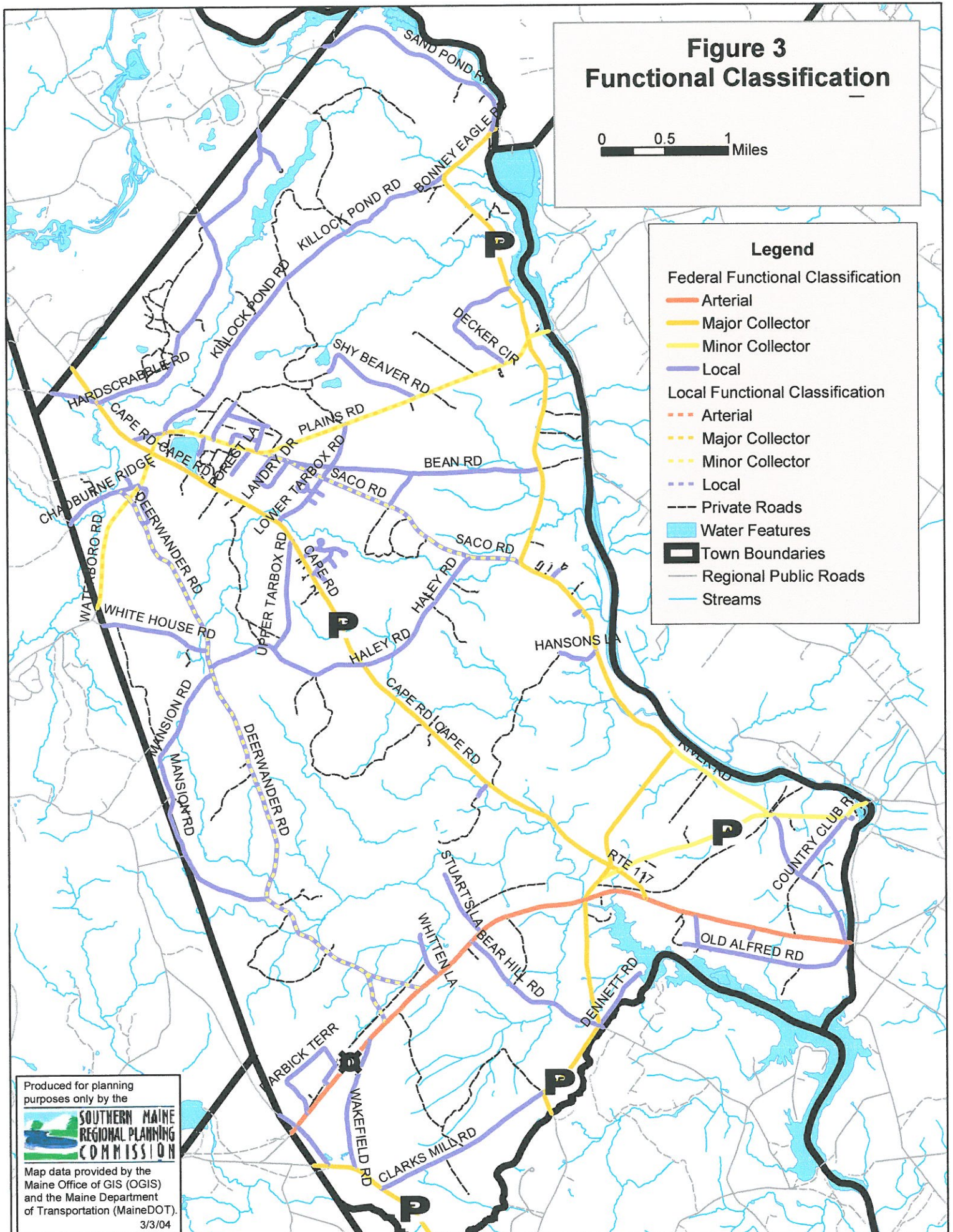
Federal Functional Classification

- Arterial
- Major Collector
- Minor Collector
- Local

Local Functional Classification

- Arterial
- Major Collector
- Minor Collector
- Local

- Private Roads
- Water Features
- Town Boundaries
- Regional Public Roads
- Streams



Produced for planning
purposes only by the










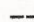



Map data provided by the
Maine Office of GIS (OGIS)
and the Maine Department
of Transportation (MaineDOT).

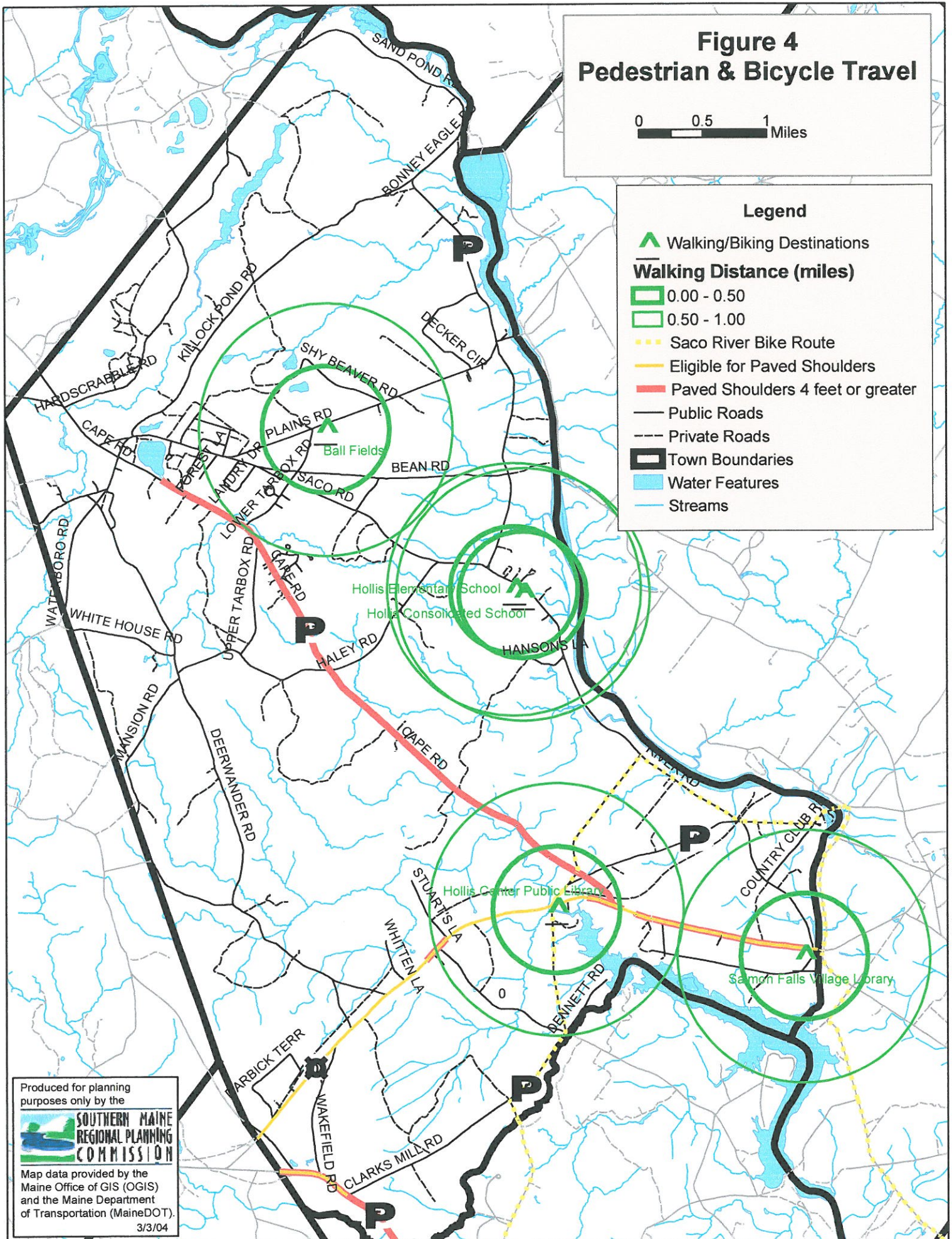
3/3/04

Figure 4
Pedestrian & Bicycle Travel

0 0.5 1 Miles

Legend

-  Walking/Biking Destinations
- Walking Distance (miles)**
 -  0.00 - 0.50
 -  0.50 - 1.00
-  Saco River Bike Route
-  Eligible for Paved Shoulders
-  Paved Shoulders 4 feet or greater
-  Public Roads
-  Private Roads
-  Town Boundaries
-  Water Features
-  Streams




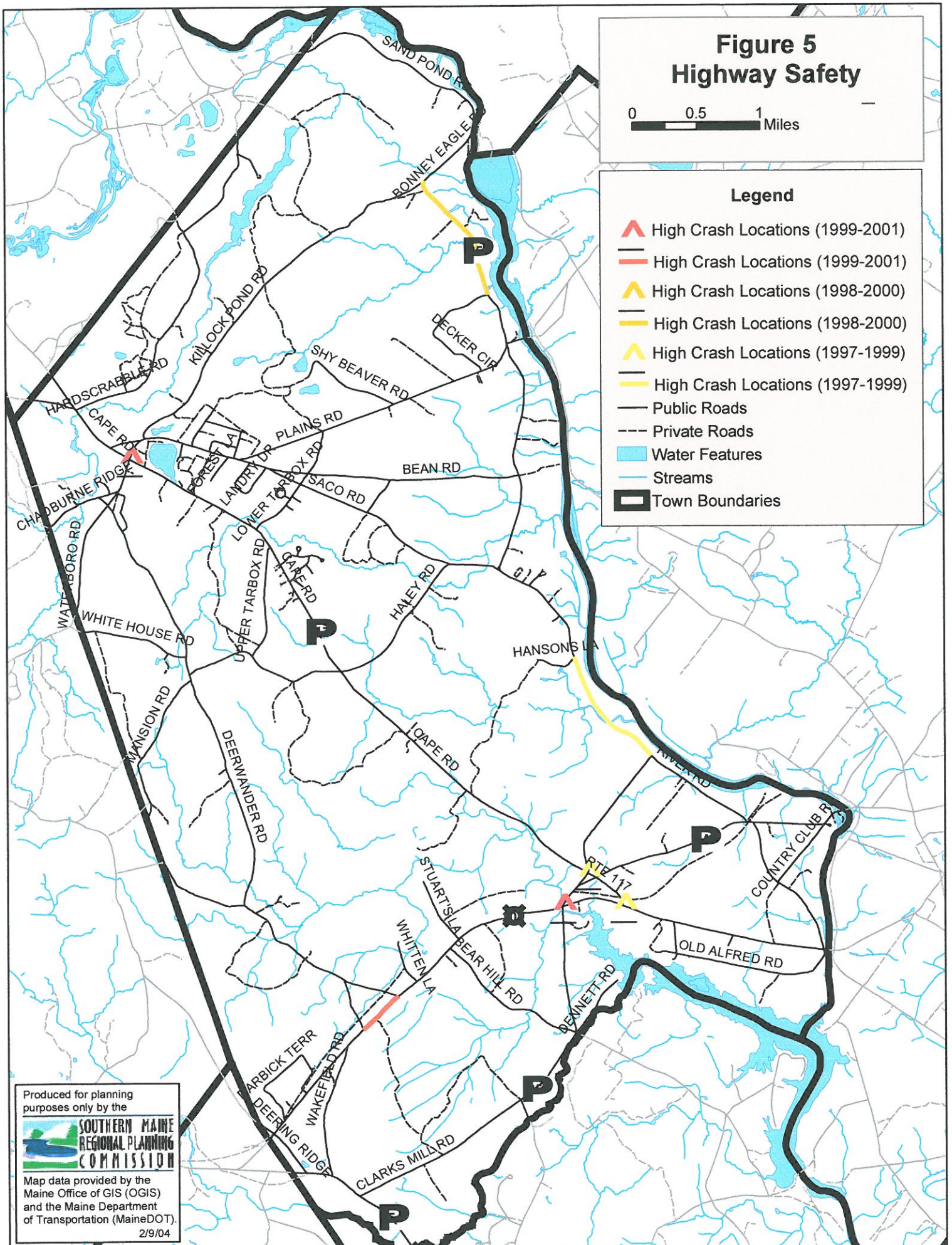
Produced for planning
purposes only by the
 **SOUTHERN MAINE
REGIONAL PLANNING
COMMISSION**
Map data provided by the
Maine Office of GIS (OGIS)
and the Maine Department
of Transportation (MaineDOT).
3/3/04

Figure 5 Highway Safety

0 0.5 1 Miles

Legend

-  High Crash Locations (1999-2001)
-  High Crash Locations (1999-2001)
-  High Crash Locations (1998-2000)
-  High Crash Locations (1998-2000)
-  High Crash Locations (1997-1999)
-  High Crash Locations (1997-1999)
-  Public Roads
-  Private Roads
-  Water Features
-  Streams
-  Town Boundaries



Produced for planning
purposes only by the



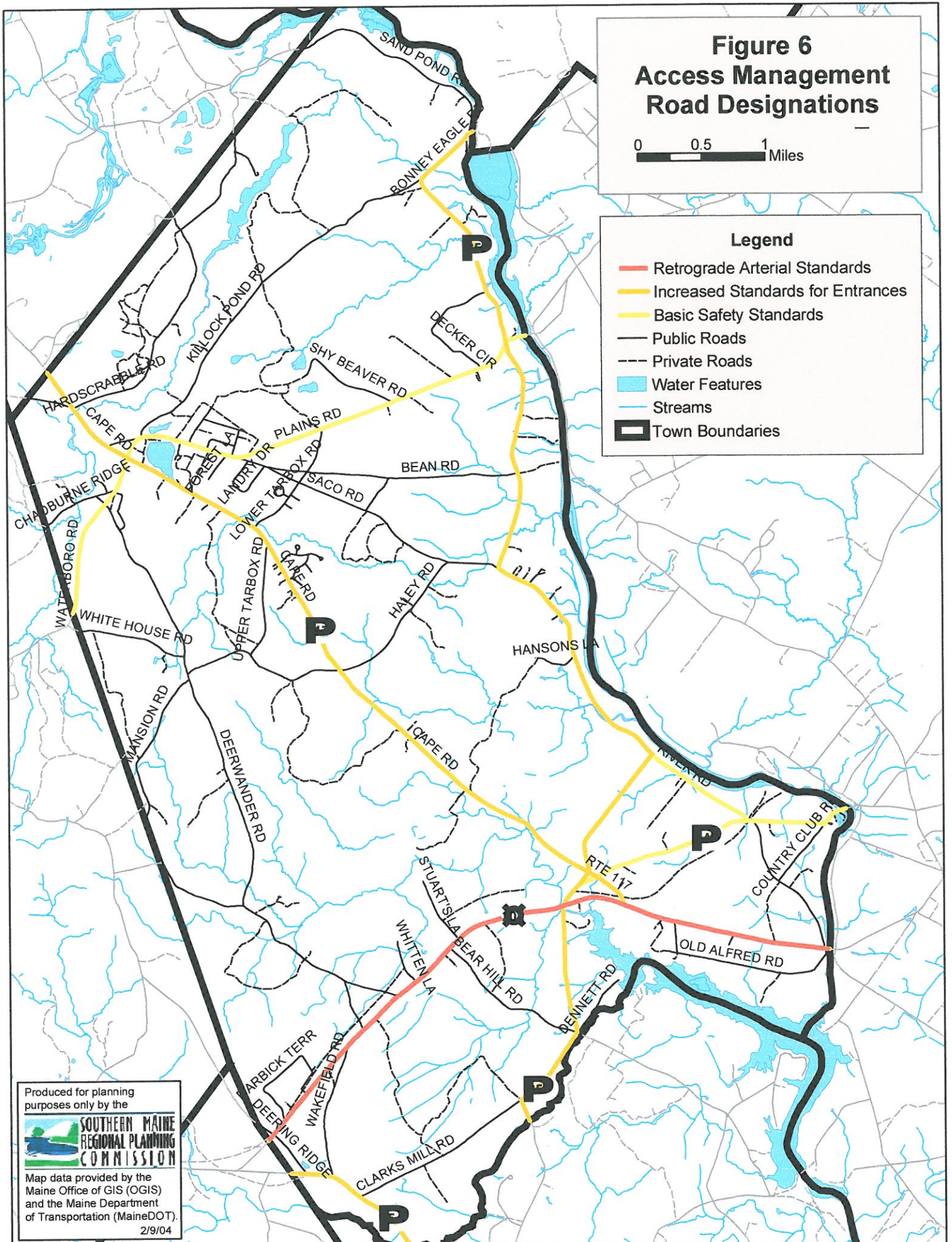
Map data provided by the
Maine Office of GIS (OGIS)
and the Maine Department
of Transportation (MaineDOT).
2/9/04

Figure 6
Access Management
Road Designations

0 0.5 1 Miles

Legend

- Retrograde Arterial Standards
- Increased Standards for Entrances
- Basic Safety Standards
- Public Roads
- Private Roads
- █ Water Features
- Streams
- Town Boundaries










Produced for planning
purposes only by the
**SOUTHERN MAINE
REGIONAL PLANNING
COMMISSION**
Map data provided by the
Maine Office of GIS (OGIS)
and the Maine Department
of Transportation (MaineDOT).
2/9/04

Figure 8
HOLLIS
Aquifers

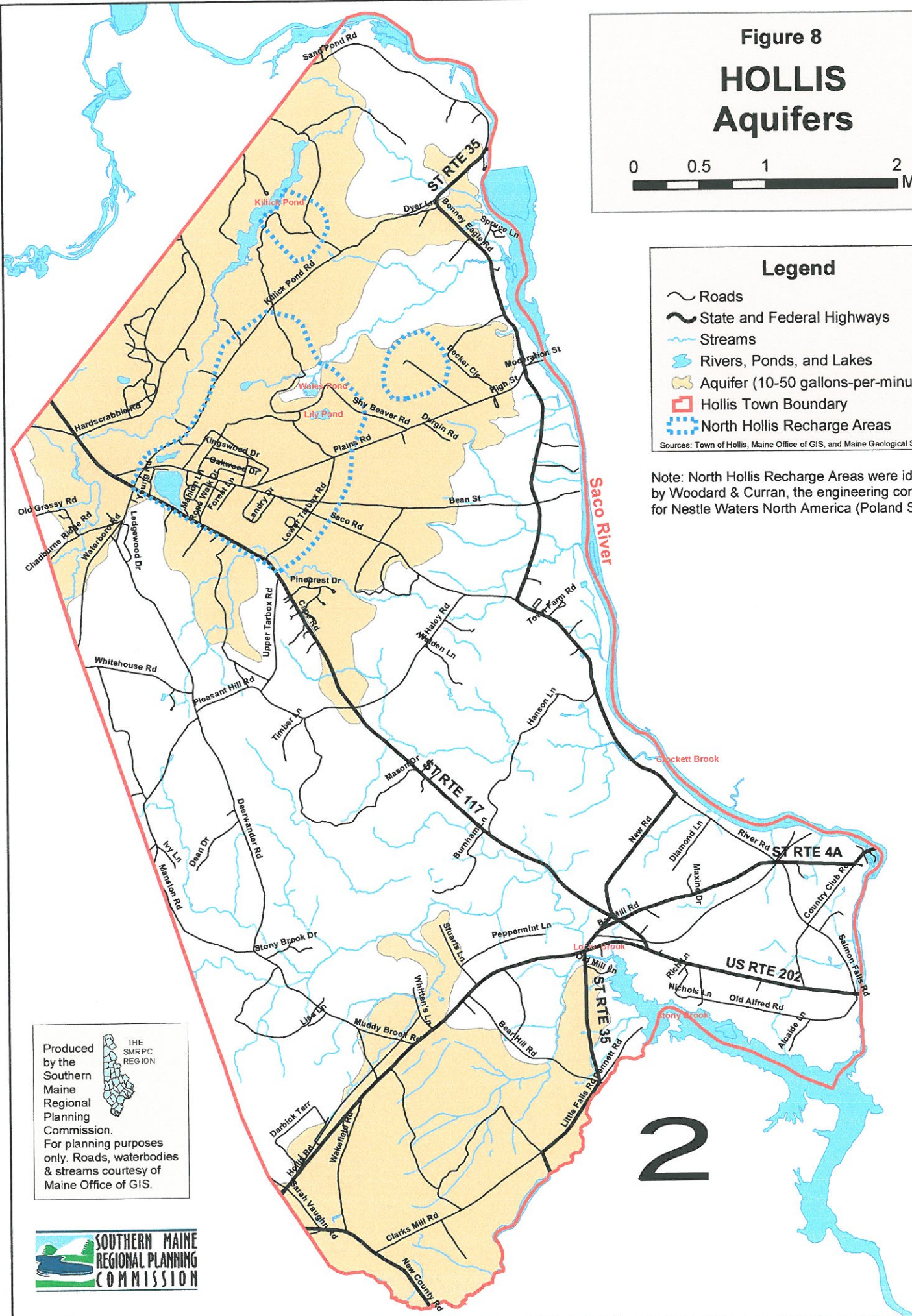
0 0.5 1 2 Miles

Legend

-  Roads
-  State and Federal Highways
-  Streams
-  Rivers, Ponds, and Lakes
-  Aquifer (10-50 gallons-per-minute)
-  Hollis Town Boundary
-  North Hollis Recharge Areas

Sources: Town of Hollis, Maine Office of GIS, and Maine Geological Survey

Note: North Hollis Recharge Areas were identified by Woodard & Curran, the engineering consultant for Nestle Waters North America (Poland Spring)



Produced by the Southern Maine Regional Planning Commission. For planning purposes only. Roads, waterbodies & streams courtesy of Maine Office of GIS.



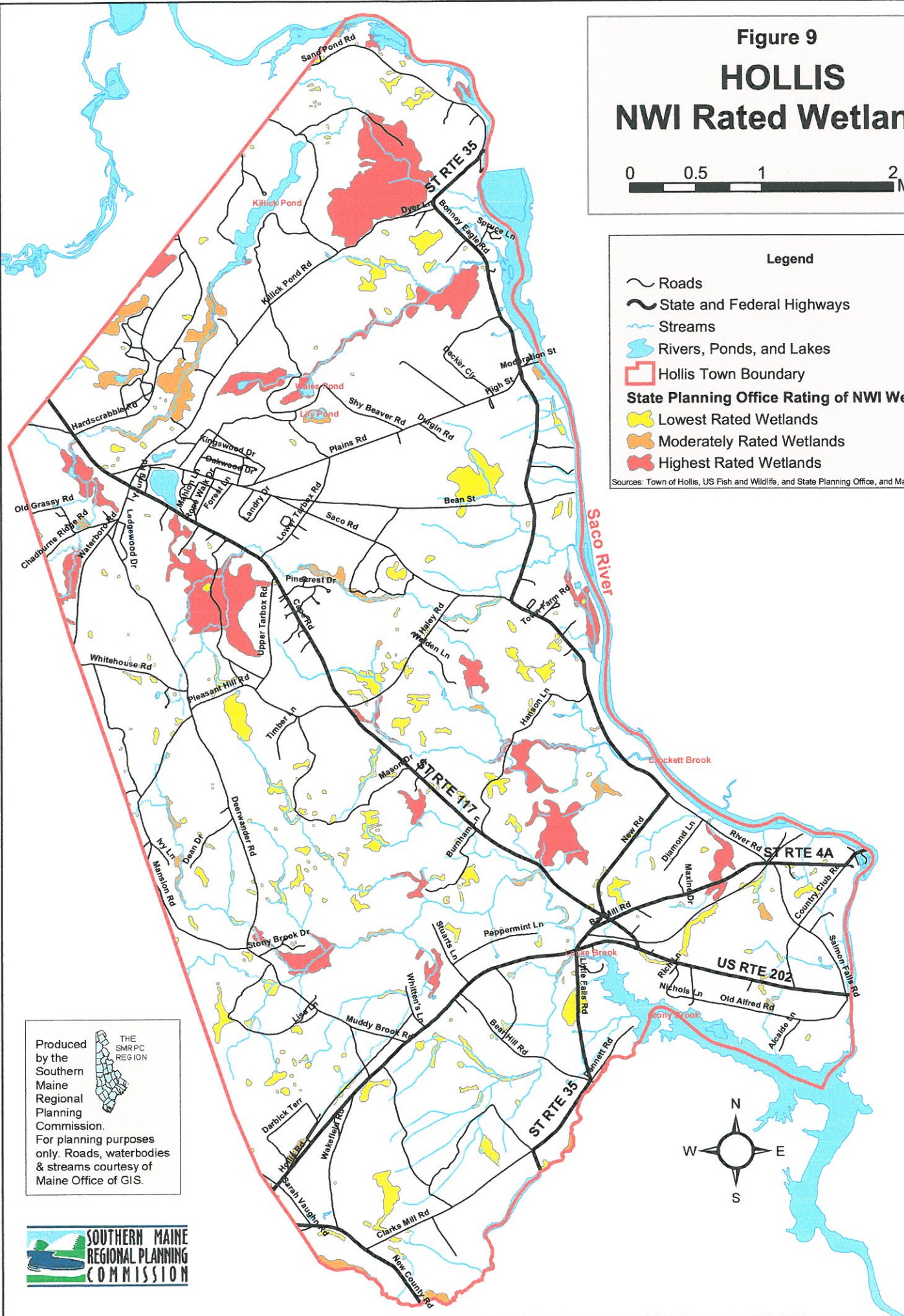
Figure 9
HOLLIS
NWI Rated Wetlands

0 0.5 1 2 Miles

Legend

- ~ Roads
- ~ State and Federal Highways
- ~ Streams
- ~ Rivers, Ponds, and Lakes
- Hollis Town Boundary
- State Planning Office Rating of NWI Wetlands**
- Lowest Rated Wetlands
- Moderately Rated Wetlands
- Highest Rated Wetlands

Sources: Town of Hollis, US Fish and Wildlife, and State Planning Office, and Maine Office of GIS.



Produced by the Southern Maine Regional Planning Commission. For planning purposes only. Roads, waterbodies & streams courtesy of Maine Office of GIS.

Figure 10

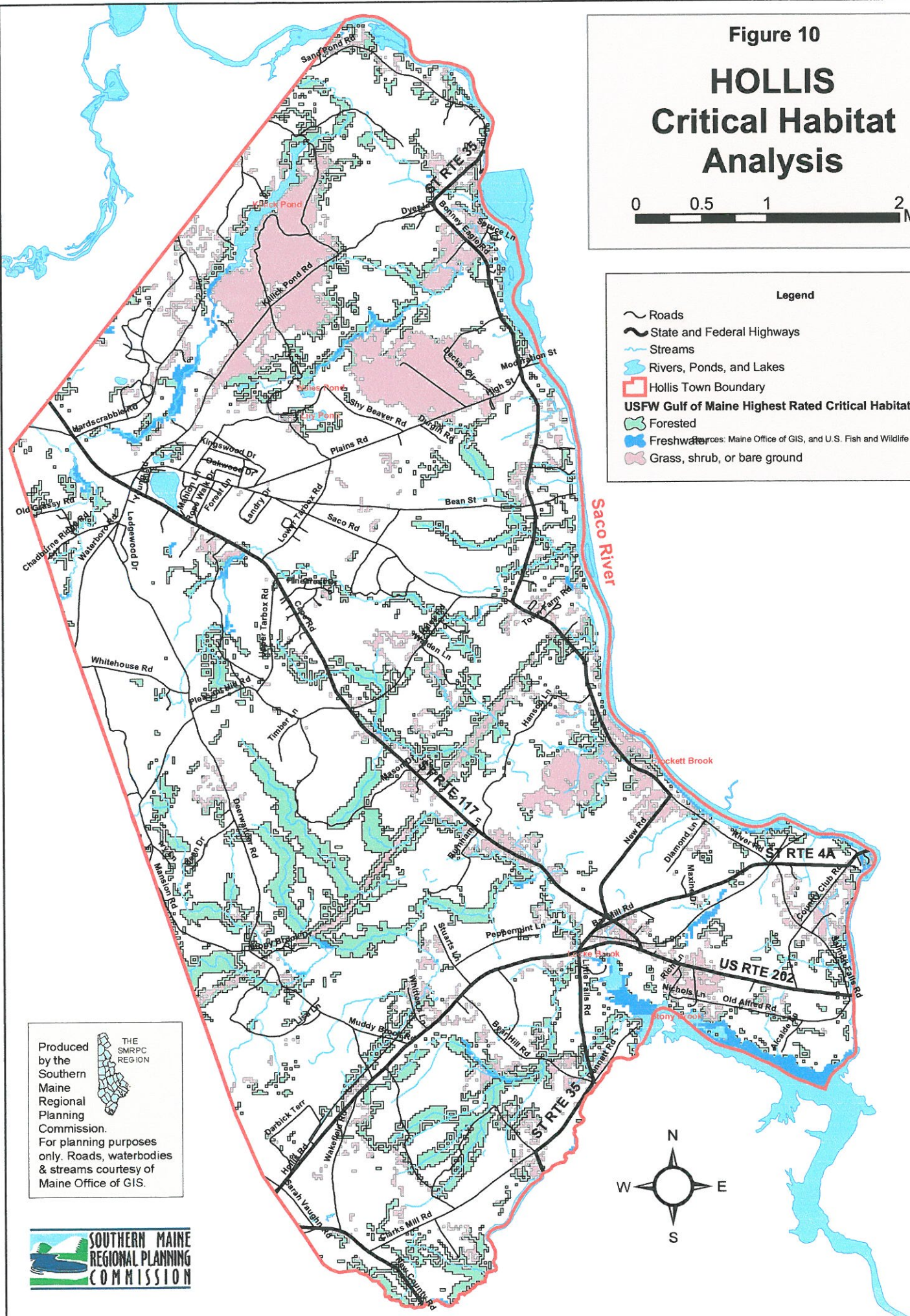
HOLLIS Critical Habitat Analysis

0 0.5 1 2 Miles

Legend

- ~ Roads
- ~ State and Federal Highways
- ~ Streams
- ~ Rivers, Ponds, and Lakes
- Hollis Town Boundary
- USFW Gulf of Maine Highest Rated Critical Habitats by Type**
 - Forested
 - Freshwater
 - Grass, shrub, or bare ground

Sources: Maine Office of GIS, and U.S. Fish and Wildlife



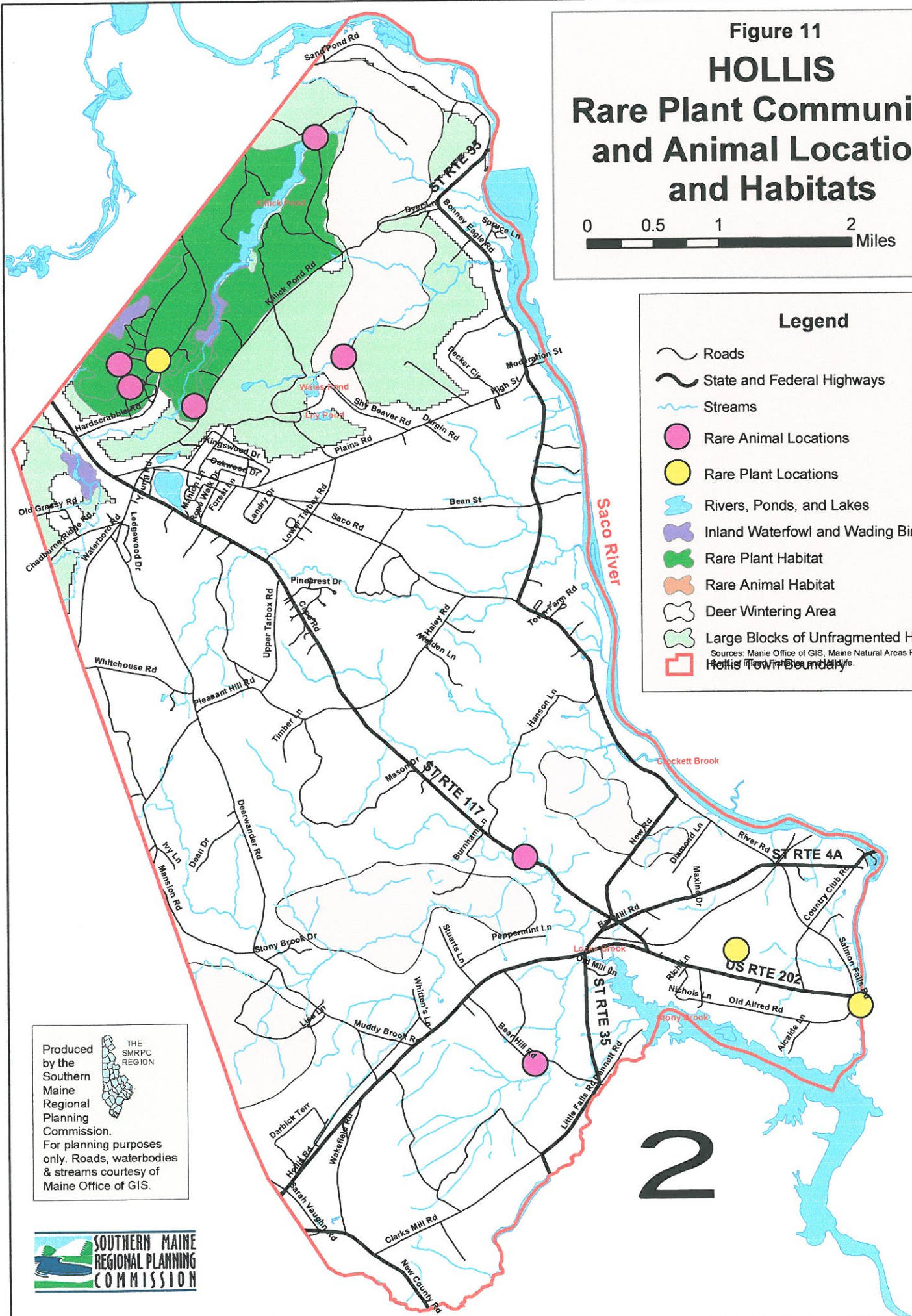
Produced by the Southern Maine Regional Planning Commission. For planning purposes only. Roads, waterbodies & streams courtesy of Maine Office of GIS.

Figure 11 HOLLIS Rare Plant Communities and Animal Locations and Habitats

0 0.5 1 2 Miles

Legend

- Roads
 - State and Federal Highways
 - Streams
 - Rare Animal Locations
 - Rare Plant Locations
 - Rivers, Ponds, and Lakes
 - Inland Waterfowl and Wading Bird Habitat
 - Rare Plant Habitat
 - Rare Animal Habitat
 - Deer Wintering Area
 - Large Blocks of Unfragmented Habitat
- Sources: Maine Office of GIS, Maine Natural Areas Program, and Maine
Hollis Town Boundary



Produced by the Southern Maine Regional Planning Commission. For planning purposes only. Roads, waterbodies & streams courtesy of Maine Office of GIS.

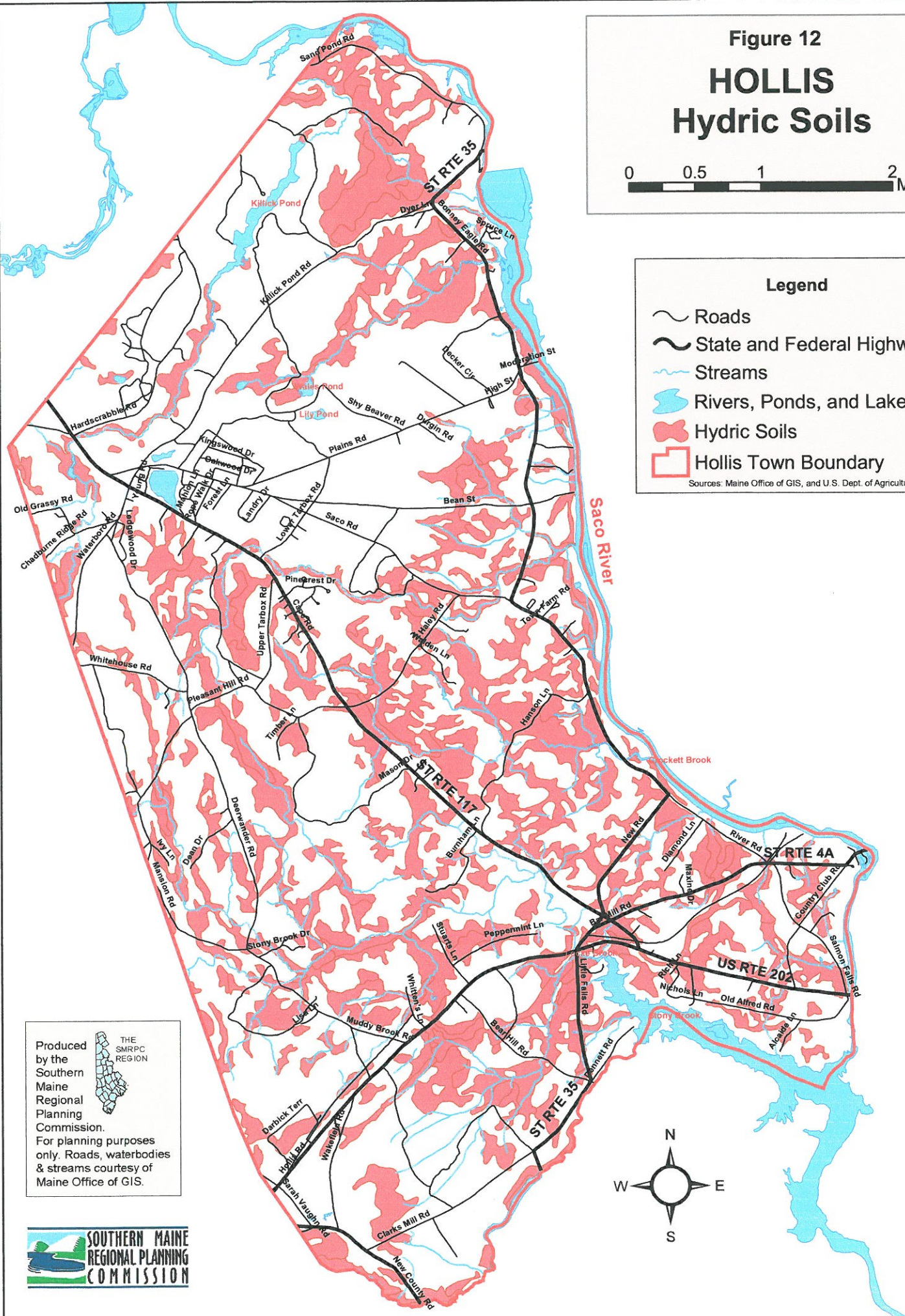
Figure 12
HOLLIS
Hydric Soils

0 0.5 1 2 Miles

Legend

-  Roads
-  State and Federal Highways
-  Streams
-  Rivers, Ponds, and Lakes
-  Hydric Soils
-  Hollis Town Boundary

Sources: Maine Office of GIS, and U.S. Dept. of Agriculture



Produced
by the
Southern
Maine
Regional
Planning
Commission.
For planning purposes
only. Roads, waterbodies
& streams courtesy of
Maine Office of GIS.

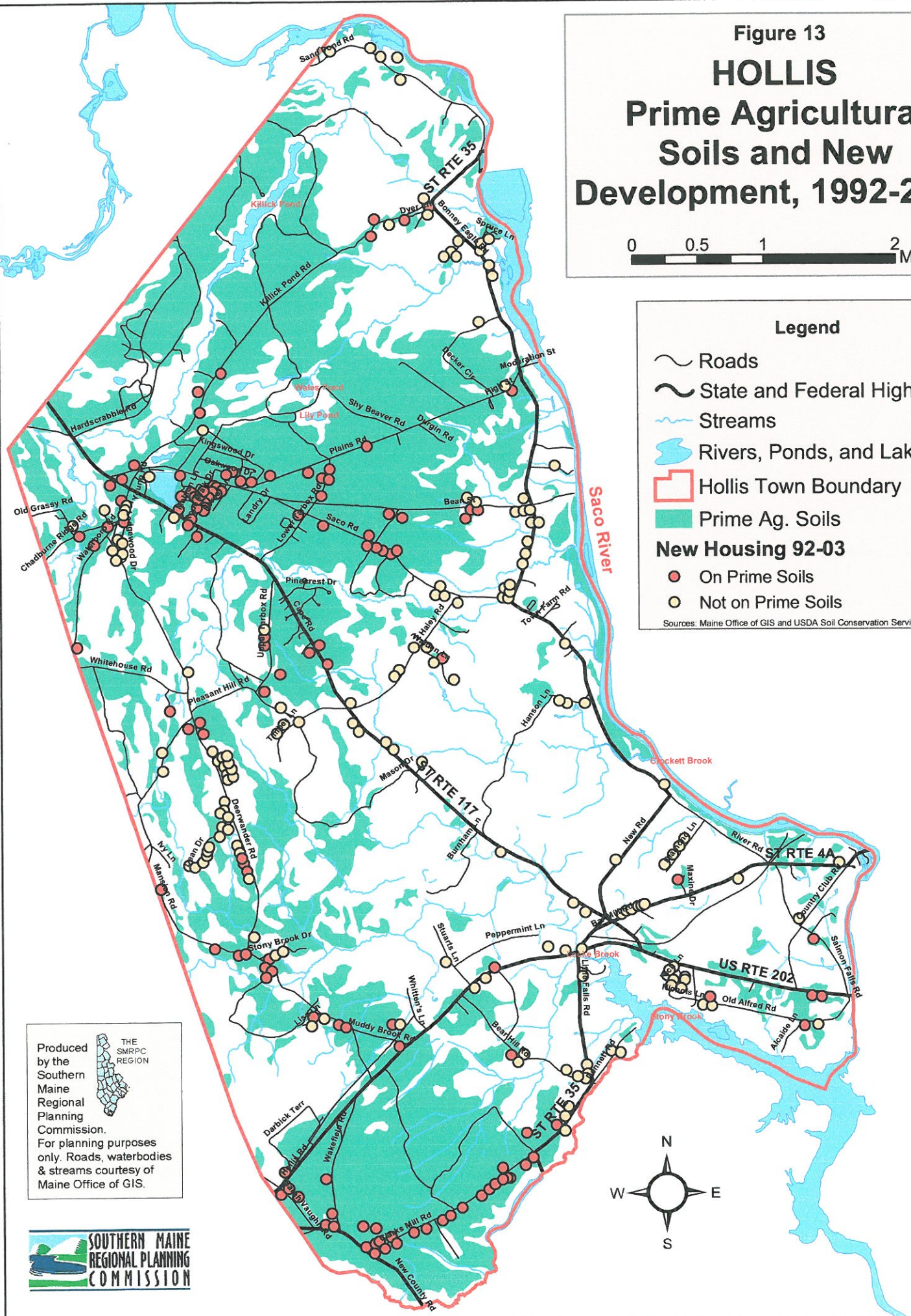
Figure 13
HOLLIS
Prime Agricultural
Soils and New
Development, 1992-2003

0 0.5 1 2 Miles

Legend

- ~ Roads
- ~ State and Federal Highways
- ~ Streams
- ~ Rivers, Ponds, and Lakes
- Hollis Town Boundary
- Prime Ag. Soils
- New Housing 92-03**
 - On Prime Soils
 - Not on Prime Soils

Sources: Maine Office of GIS and USDA Soil Conservation Service









Produced by the Southern Maine Regional Planning Commission. For planning purposes only. Roads, waterbodies & streams courtesy of Maine Office of GIS.

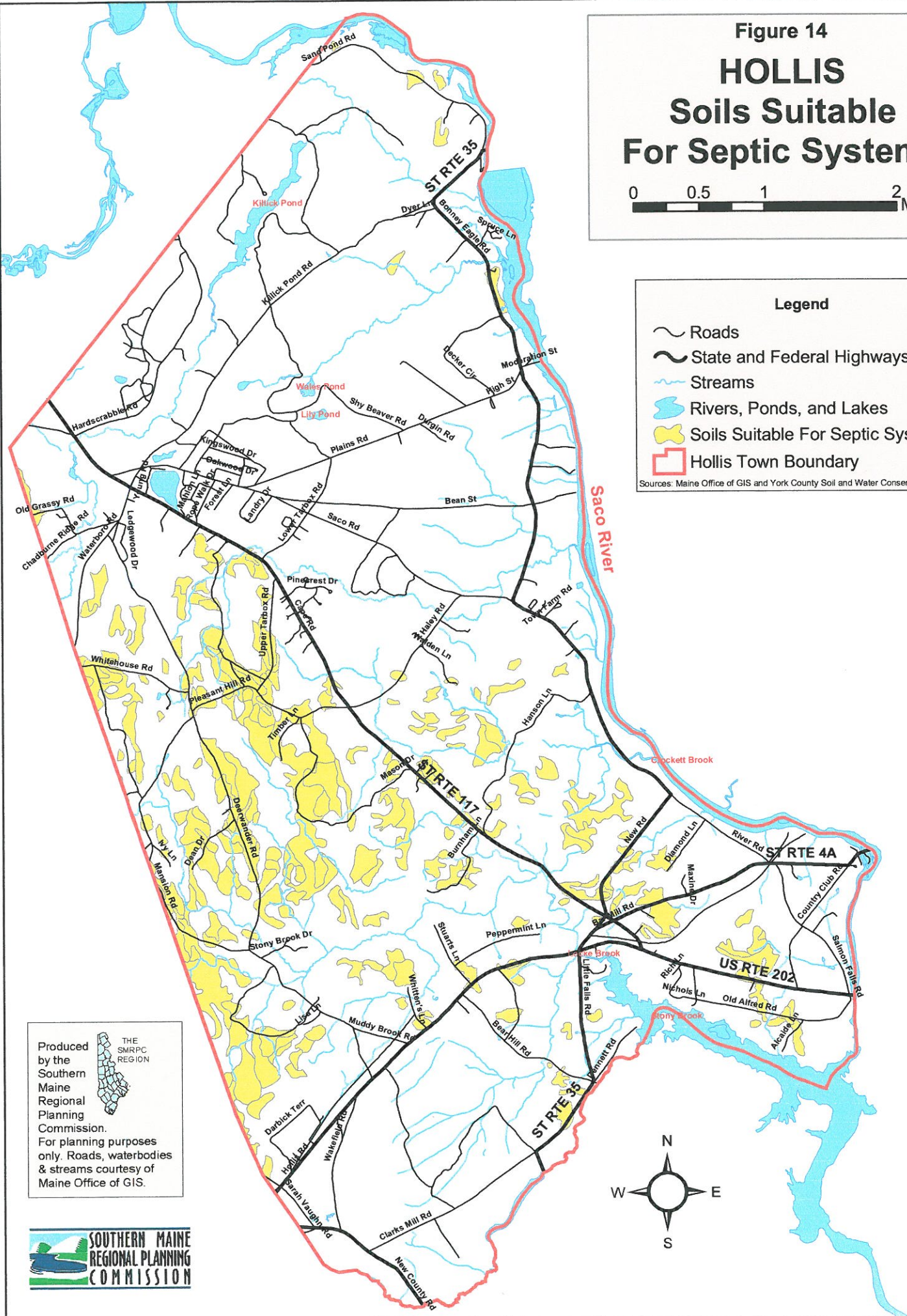
Figure 14
HOLLIS
Soils Suitable
For Septic Systems

0 0.5 1 2 Miles

Legend

-  Roads
-  State and Federal Highways
-  Streams
-  Rivers, Ponds, and Lakes
-  Soils Suitable For Septic Systems
-  Hollis Town Boundary

Sources: Maine Office of GIS and York County Soil and Water Conservation District



Produced by the Southern Maine Regional Planning Commission. For planning purposes only. Roads, waterbodies & streams courtesy of Maine Office of GIS.

Figure 15

TOWN OF HOLLIS 1991 Comp. Plan Growth Areas & Housing Growth, 1992-2003



0 0.5 1 2 Miles

Legend

- Roads
 - Ponds
 - Streams
 - Rivers
 - Farm/Forest/Conservation
 - Commercial Village
 - Developing Residential
 - Historic Village
 - Rural Residential
- ### Housing Unit Type
- Mobile
 - SF

WATERBORO

LIMINGTON

Resource Conservation Area

WEST
BUXTON

BUXTON

Farm & Forest Area

HOLLIS
CENTER

BAR
MILLS

SALMON
FALLS

CLARK'S
MILLS

LYMAN

DAYTON

Produced
by the
Southern
Maine
Regional
Planning
Commission.
For planning purposes
only. Roads, waterbodies
& streams courtesy of
Maine Office of GIS.

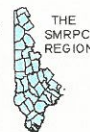


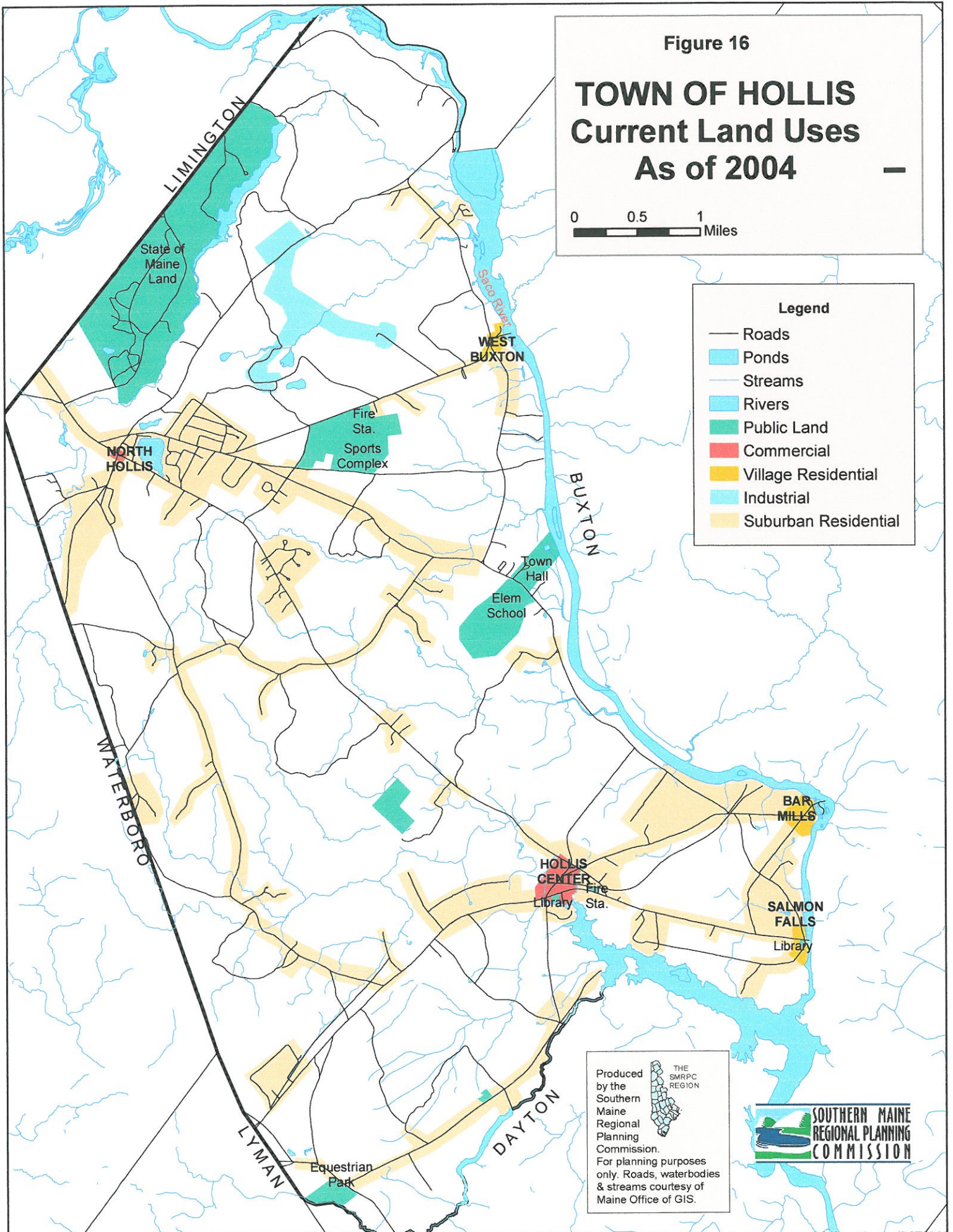
Figure 16

TOWN OF HOLLIS Current Land Uses As of 2004

0 0.5 1 Miles

Legend

- Roads
- Ponds
- Streams
- Rivers
- Public Land
- Commercial
- Village Residential
- Industrial
- Suburban Residential



Produced by the Southern Maine Regional Planning Commission. For planning purposes only. Roads, waterbodies & streams courtesy of Maine Office of GIS.

**SOUTHERN MAINE
REGIONAL PLANNING
COMMISSION**

Figure 17

TOWN OF HOLLIS Existing Land Use and Development Opportunities and Constraints

0 0.5 1 2 Miles

Legend

- Developed
- Publicly Owned
- Rare Animal Location
- Rare Plant Location
- Rare Animal/Plant Habitat
- Inland Waterfowl/Wading Bird Habitat
- Aquifer Recharge Area
- Soils Suitable for Septic Disposal
- Existing Zoning
- Roads

WATERBORO

LIMINGTON

BUXTON

WEST
BUXTON

R-2

R-3

R-4

R-5

BAR
MILLS

SALMON
FALLS

R-3

DAYTON

LYMAN

Produced
by the
Southern
Maine
Regional
Planning
Commission.
For planning purposes
only. Roads, waterbodies
& streams courtesy of
Maine Office of GIS.



Figure 18

TOWN OF HOLLIS Future Land Use Map FINAL June 2007



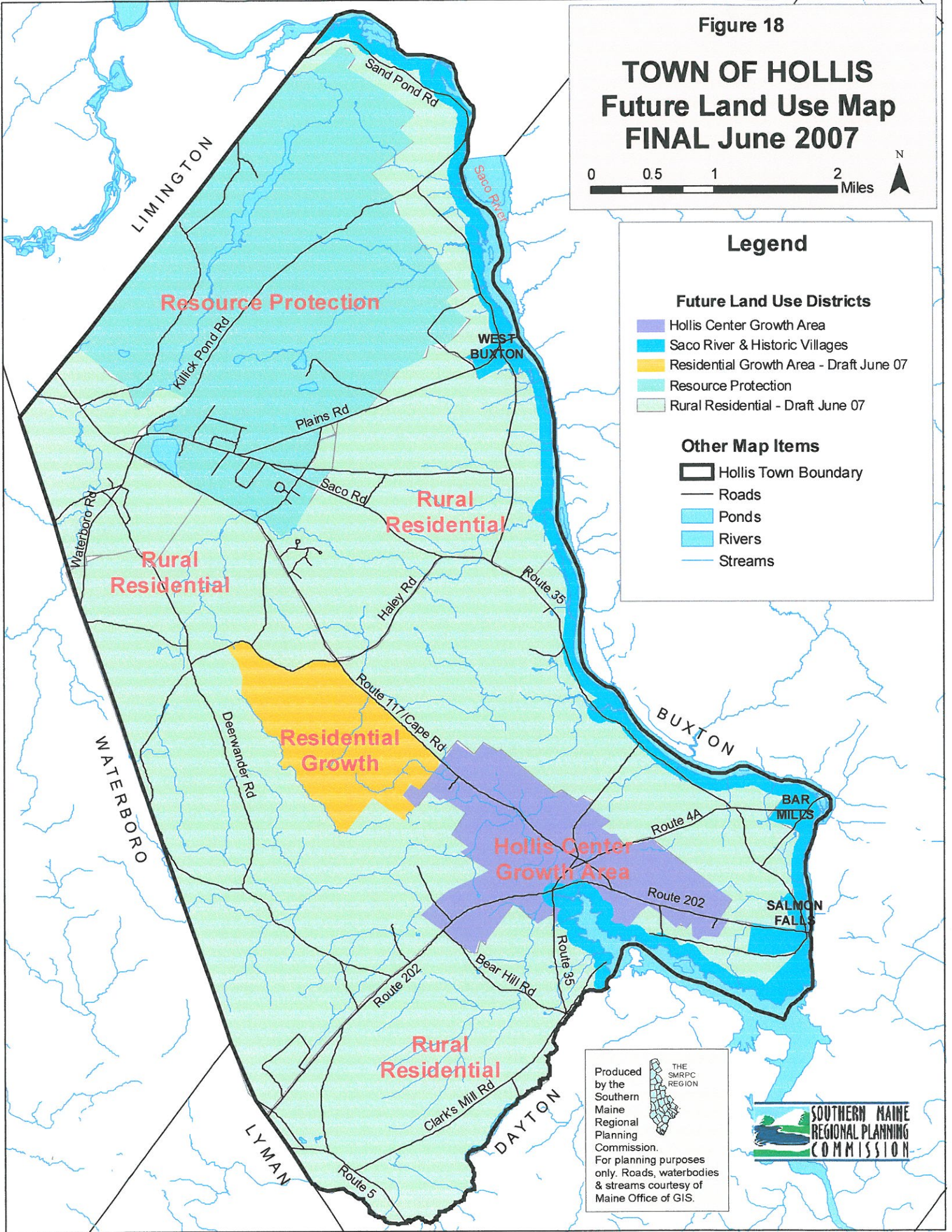
Legend

Future Land Use Districts

- Hollis Center Growth Area
- Saco River & Historic Villages
- Residential Growth Area - Draft June 07
- Resource Protection
- Rural Residential - Draft June 07

Other Map Items

- Hollis Town Boundary
- Roads
- Ponds
- Rivers
- Streams



Produced by the Southern Maine Regional Planning Commission. For planning purposes only. Roads, waterbodies & streams courtesy of Maine Office of GIS.

